



Denmark, Aarhus
Rolf Bernt (Tech and Sales)



**GLASS LOUVRED
VENTILATORS FOR
NATURAL AND
SMOKE
VENTILATION**





❑ Fieger Lamellenfenster GmbH

- ❑ Founded in 2000, Birkenau/Odw.
- ❑ Fieger Ltd UK, Baumann GmbH (A), Australia, France, Portugal a.s.o.
- ❑ Turnover € 3,5 million, 15 people
- ❑ Specialised in Glazed Louvred Windows (Natural and Smoke Ventilation)



- ❑ **FLW Double-glazed ventilator**
 - ❑ Centre pivoted glass louvres
 - ❑ Opening angle 85° (large free area provided)

- ❑ **FGL Single-glazed ventilator**
 - ❑ Same but not thermally broken. For protected areas, interior, secondary skin or cold rooms.

- ❑ **FLW 40 Triple-glazed ventilator**
 - ❑ Best performance (Uvalue up to 0,9 W/m²K), Watertight EN 12208 – Class 8A (450 Pa)

- ❑ **SmoTec (EN 12101-2 certified)**
 - ❑ Aaero and Ageometric free areas (24 V)



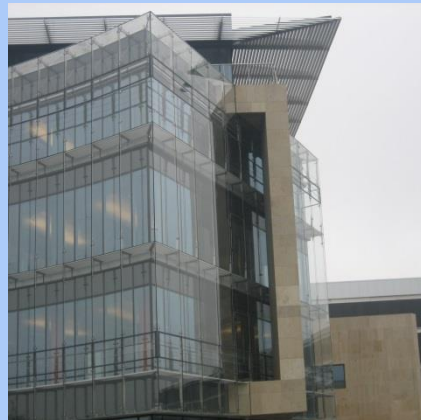
❑ Controls (big variety)

- ❑ Motor Drive 24 volt DC or 230 volt AC (D&H,WSS) EN12101-2
- ❑ Manually (handle or crank)
- ❑ Pneumatic
- ❑ BMS
- ❑ Controls
- ❑ Finger-trapping
- ❑ Up to 3m² or 3m height
- ❑ Glass and Panels
- ❑ Colours RAL powder coated



□ FLW range

- combines large free area of ventilation, good thermal performance (up to $0,9 \text{ W/m}^2\text{K}$) and safety in case of fire or smoke (80% casualties – smoke)
- Used in secondary skin façade to heat in Winter and cool in Summer (FGL)
- Controlled by wind, rain, smoke, CO₂, sensors (BMS)
- Used in Schools, hospitals, office blocks, facades or renovation of older Buildings



- ❑ looking for Partner in Denmark who is using the windows in his Product range. Should be a company out of the glazing, facade, metal or ventilation (Smoke and natural) branch.
- ❑ Companies to be able to do the Marketing, contact with Architects and Specifiers in the Building sector not just sales, also fitting, repairs, commissioning and inspection.
- ❑ No competition

- ❑ We provide all necessary documents of testing
- ❑ We provide drawings Autocad /Inventor
- ❑ We provide Technical assistance and do training of Technicians if needed
- ❑ Manufactured to measure, no fixed sizes
Manufactured ready for installation or as kit form



- ❑ Stairwells
(Escape route)
- ❑ Shopping Centres
- ❑ Hospitals
- ❑ Schools
- ❑ Offices
- ❑ Public Buildings
- ❑ Industry
- ❑ Private sector
- ❑ Facades

